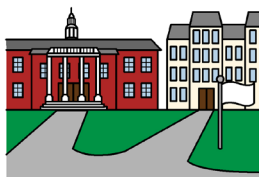


Survey

Questions about you work



XYZ University



Scope

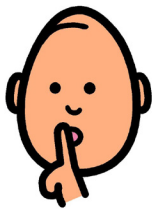


Easy English

How to do the survey

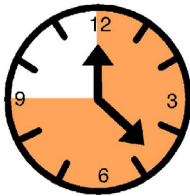


We want to keep information about you private.



Do **not** write

- your name
- or
- your personal information on the survey



We think the survey will take you 1 hour or more.

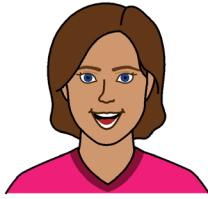
Answer all the questions



Put the survey in the envelope we give you
Post the envelope back to us.

Are you female or male?

Mark 1 answer.



Female



Male



How old are you?

Write here

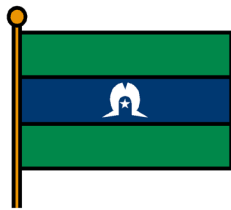
Were you born in Australia?

Mark 1 answer.



Yes

No



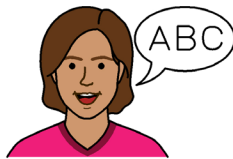
Are you Aboriginal or Torres Strait Islander?

Mark 1 answer.

Yes

No

What language do you speak?



English

Other language

Write here _____



Do you have a paid job?

Mark 1 answer.

Yes

No



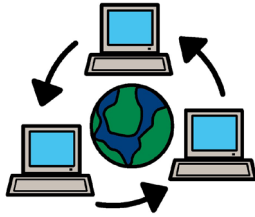
Do you do volunteer work?

Mark 1 answer.

Yes

No

How did you know about this survey?



Website



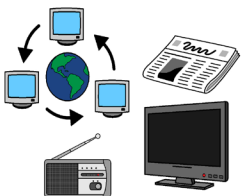
Disability service



Advocacy group



Someone told me



Media. For example,
Facebook, radio



Other

Write here _____

Scope's Communication Resource Centre wrote the Easy English.

www.scopevic.org.au

Images we used on this form

- Mayer-Johnson LLC says we can use the Picture Communication Symbols
- Valuing People ClipArt © Inspired Services, UK.
www.inspireservices.org.uk
- Change pictures © 2011. www.changepeople.co.uk.